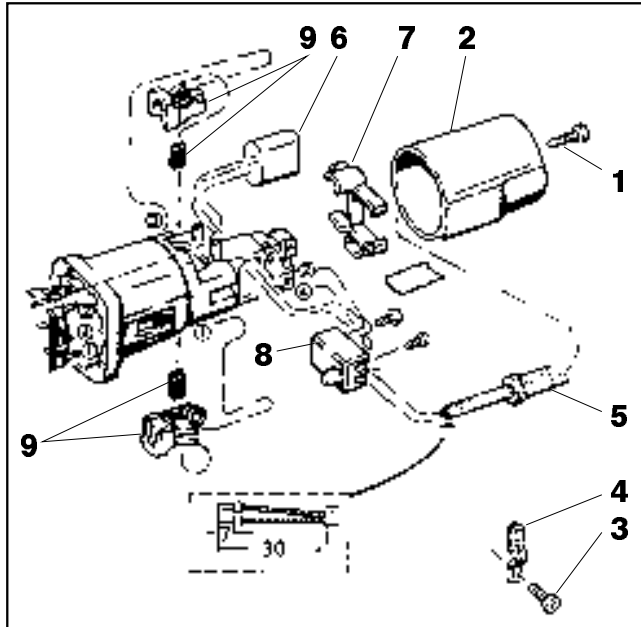


- Important!** ■ Before maintenance carry out an introduction examination with high voltage check according to VDE
- Always disconnect the plug from the socket before carrying out any work on the machine.

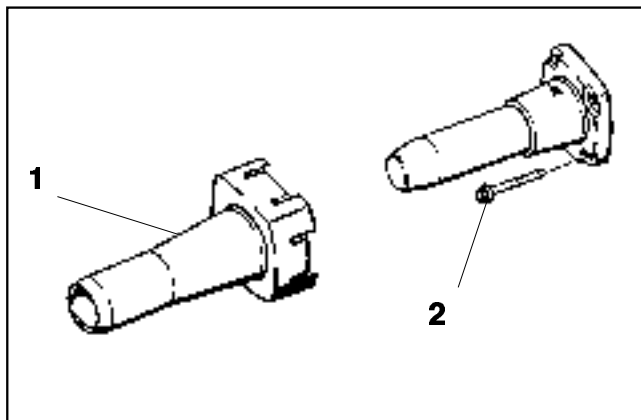
Dismantling

- 1 Remove parts (1-9) in numerical order, beginning with item (1).



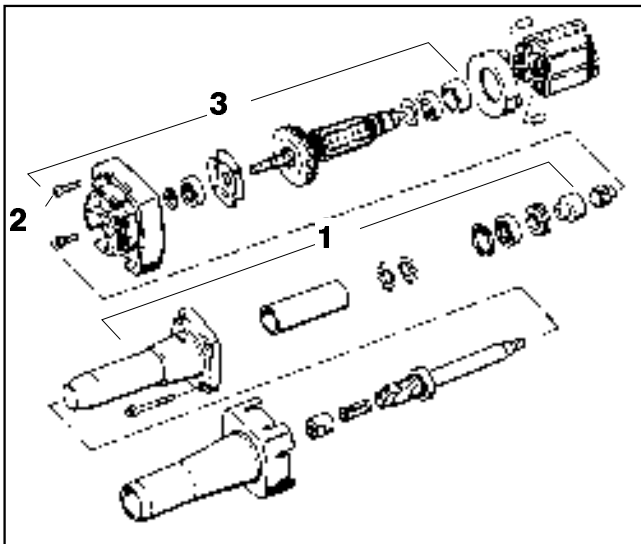
1

- 1 Lift up the locking clips of the plastic cover (1) on both sides with 2 screwdrivers, and remove cover.
- 2 Undo screws (2) using box spanner SW 5.5 (standards box spanner needs to be grinded down slightly on the external diameter).



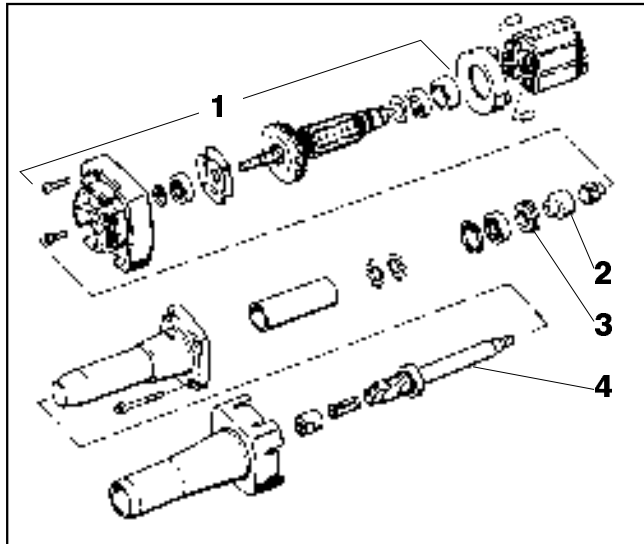
2

- 1 Remove parts (1-3) in numerical order, beginning with item (1).



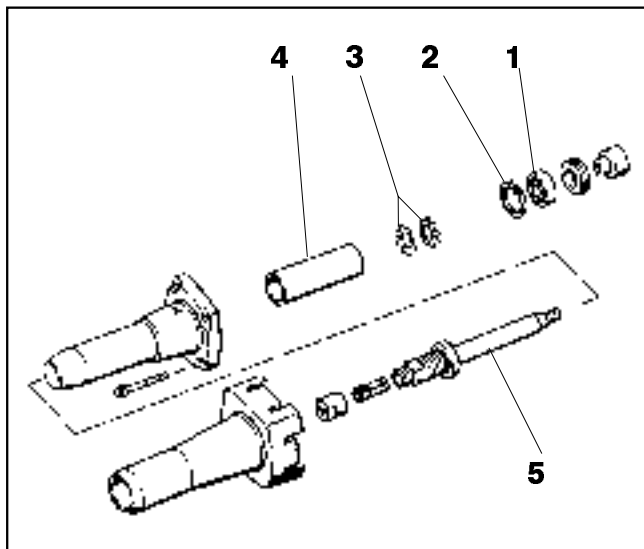
3

- 1 To loosen the drive (2) from the grinding spindle (4), place fork spanner SW 15 on the front end of the grinding spindle (right-hand thread). To counterhold, insert item (1) (armature with bearing plate and plastic pinion affixed) in the drive.
- 2 Undo item (3) using forked spanner No. 2637100 (right-hand thread).



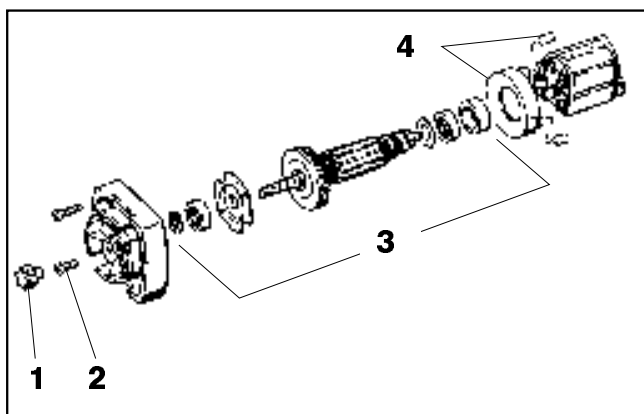
4

- 1 Remove parts (1-5) in numerical order, beginning with item (1).



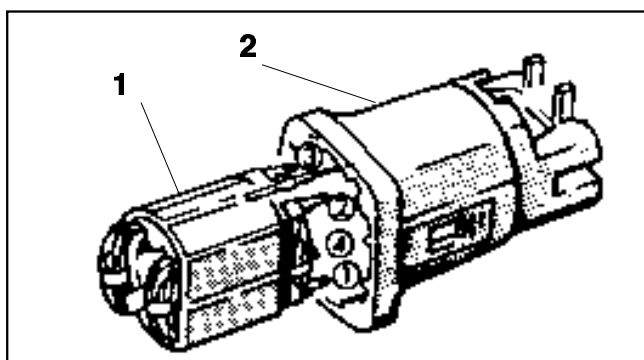
5

- 1 Remove parts (1-4) in numerical order, beginning with item (1).



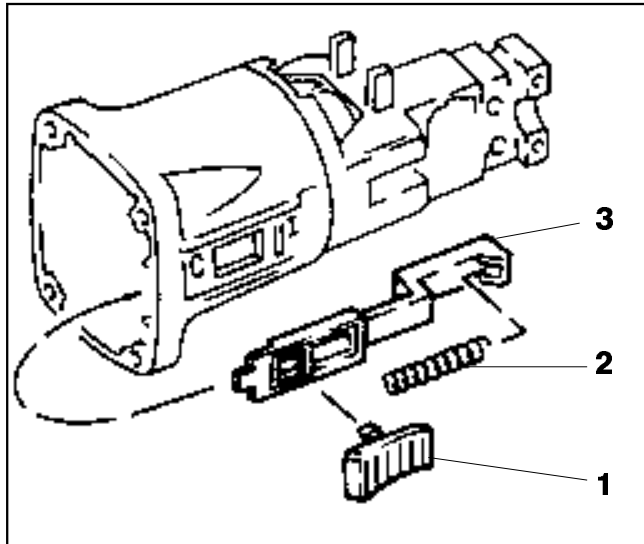
6

- 1 Knock out the field coil (1) by tapping lightly on the edge of the motor housing (2) with a plastic hammer.



7

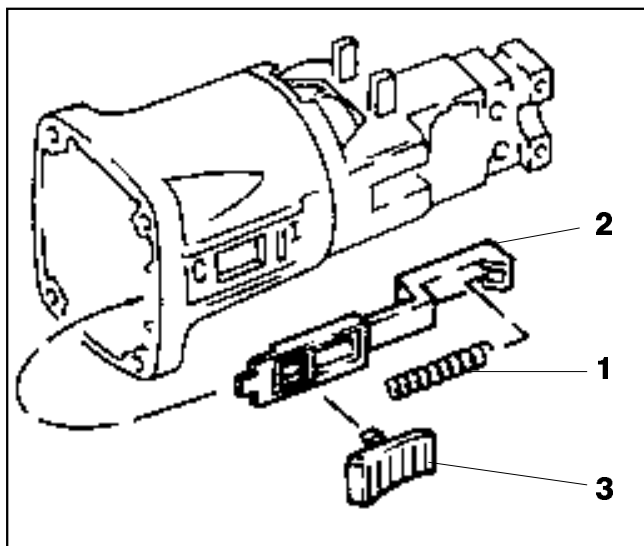
- 1 Push out button (1) with screw driver.
-
- 2 Remove parts (2) and (3), beginning with item (2).



8

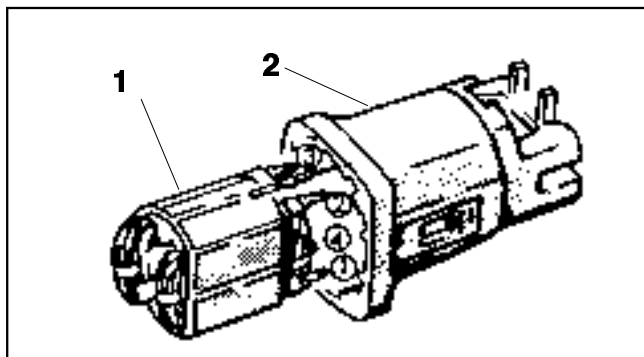
Assembly

- 1 Insert parts (1) and (2), beginning with item (1).
-
- 2 Push on button (3).



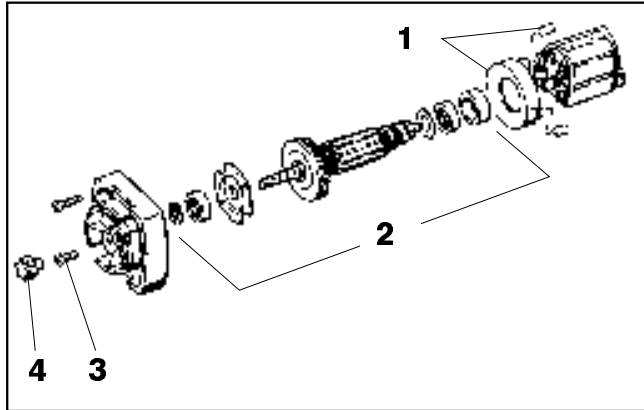
1

- 1 Insert the field coil (1) in the motor housing (2) by hitting it lightly on the rear.



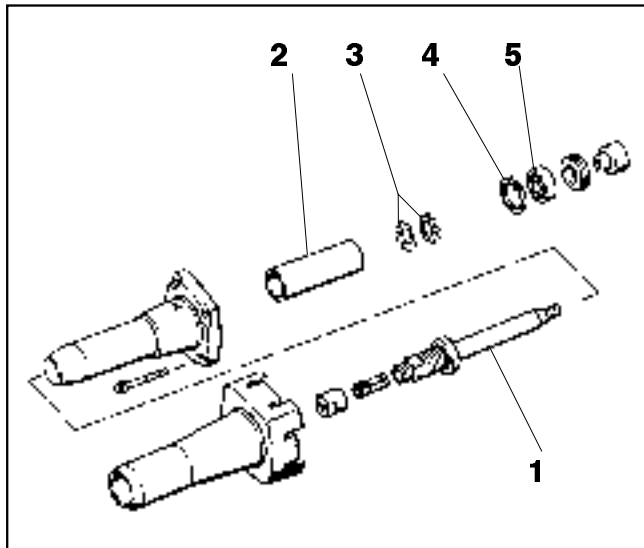
2

- 1** Insert parts (1-4) in numerical order, beginning with item (1).



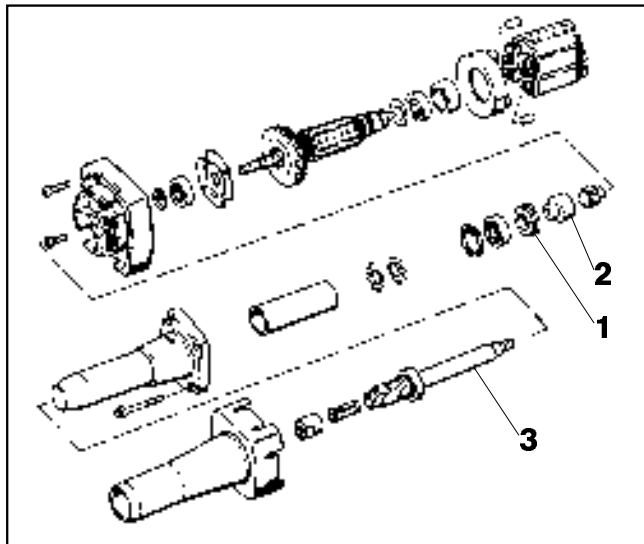
3

- 1** Insert parts (1-5) in numerical order, beginning with item (1). Star-washers (3) against each other.



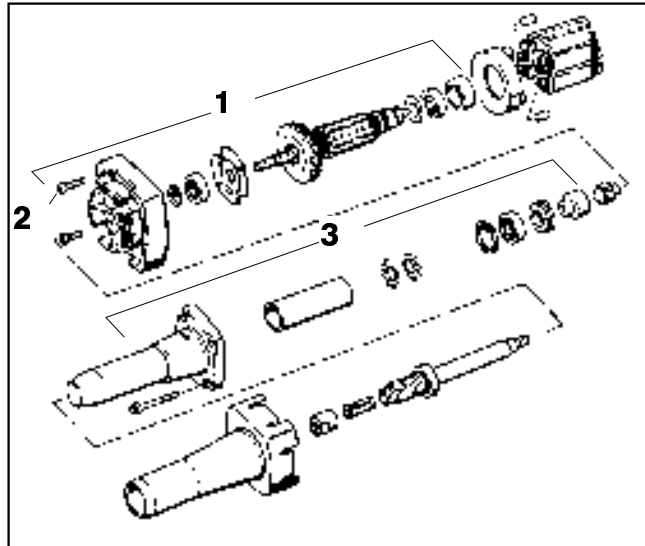
4

- 1** Mount parts (1) and (2) on the grinding spindle (3).



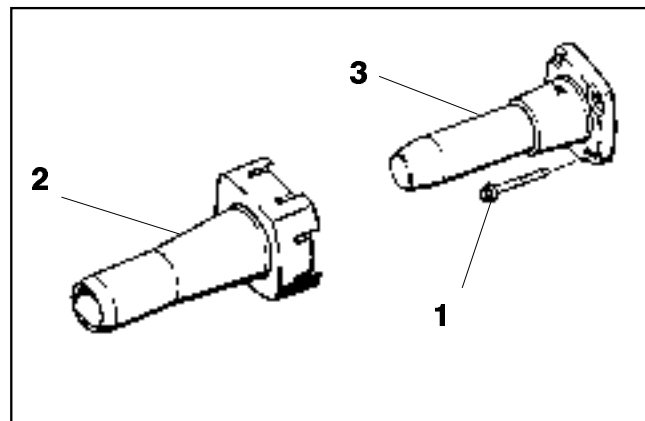
5

- 1 Mount parts (1-3) in numerical order, beginning with item (1).



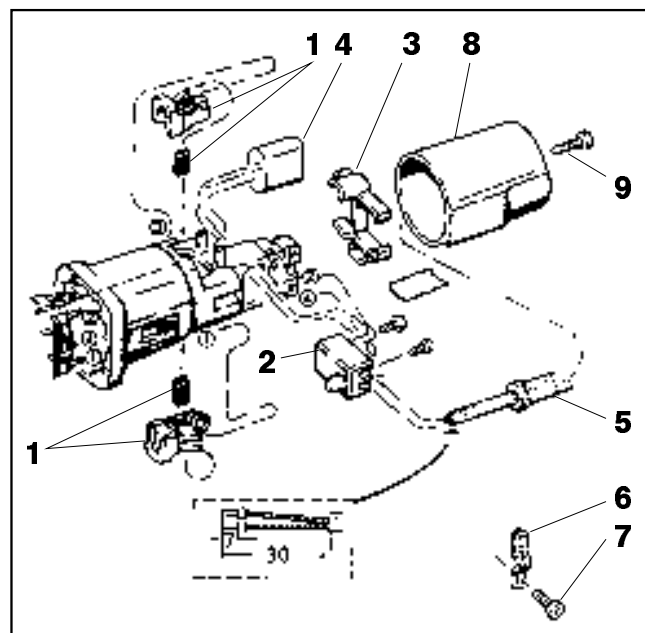
6

- 1 Fix part (3) with screws (1).
2 Press on part (2).



7

- 1 Insert parts (1-9) in numerical order, beginning with item (1).



8

- Important!**
- Give the machine a testrun!
 - Check the direction of the spindle.
 - Carry out the "Electric and Mechanic Safety Test" in accordance with the "Test Instruction".